



Encrypted RunAs

User Manual

Version 1.1 (Build #16)

© Wingnut Software, 2011

Table of Contents

Encrypted RunAs	3
Overview	3
System Requirements	4
Creating Shortcuts	4
Managing Shortcuts	7
Executing Shortcuts	8
Registering Encrypted RunAs	8
Checking for New Versions	9
Known Issues	10
Version History	10
License Agreement	15
Advanced Topics	17
Scripts	17
Overriding Features	18
Arguments	18
Best Practices	19

Encrypted RunAs

Overview

Description

Microsoft provides a command line utility called runas, this command allows programs to be run with other user credentials. The problem with Microsoft runas is that the password needs to be typed each time it is run, therefore it is not ideal for scripting or use in a corporate environment.

Features:

Encryption

Encrypted RunAs gets round this problem by creating encrypted shortcuts to programs that needs to be run with different user credentials, so the password does not need to be given to the user. ERunAs uses >128 bit encryption for the shortcuts, the password is encrypted twice using information located on the computer/domain.

CRC

Unlike other programs of this type, Encrypted RunAs can also check that the original file the shortcut was created for has not been swapped with an unauthorized file (this prevents users from trying to run unauthorized programs with elevated privileges).

Account Verification

The program checks the accounts exist on the local machine or domain before allowing the shortcut to be tested, and then saved.

Shortcut Management

Shortcuts can easily created on Users Desktops and Programs Menu with Encrypted RunAs, they can also be removed using the Manage Shortcuts tool.

Network Drive and Printer Re-Mapping

Any printers or network drives mapped to the current user are re-mapped when the Encrypted RunAs shortcut is run (Encrypted RunAs can remap Netware shares).

Encrypted RunAs Home use

You can give all your family members Limited Accounts, if a program they have wont run correctly set up an Encrypted RunAs shortcut with details of an account with administrative privileges.

Encrypted RunAs Business use

Working in a corporate establishment it soon becomes apparent that some software will not run without adding the domain user to the local Administrator account, this is not an ideal situation. Encrypted RunAs Shortcuts allows only the required rights to be given to the program to run and not the whole computer.

System Requirements

Encrypted RunAs runs on:

- Windows XP Home (local user accounts only)
- Windows XP Professional
- Windows 2000
- Windows Vista 32/64 bit - Basic (local user accounts only)
- Windows Vista 32/64 bit - Home Premium / Business /Ultimate

Setup

The setup program registers all required DLL files for the GUI to work (these are only required on machine creating shortcuts). It is normal for the installer to install ERunAs.exe in the WINDOWS or WINNT directory.

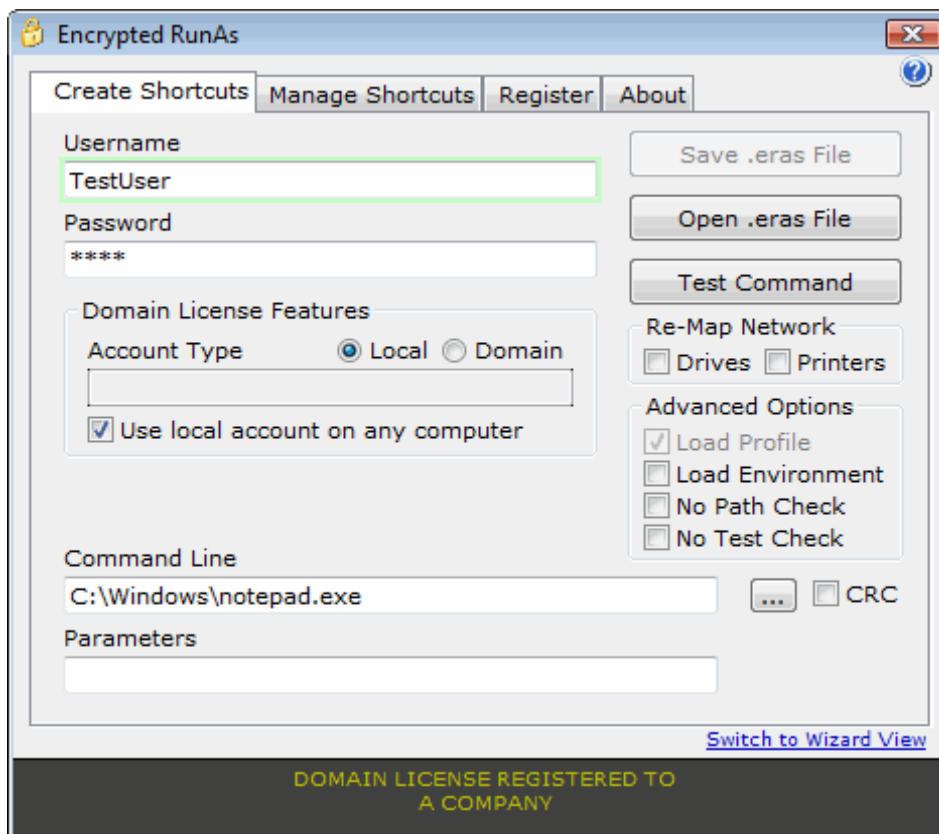
On machines executing the shortcuts only, you can download and inst all the SetupERunAs-SILENT.exe, this automatically installs the ERunAs.exe to WINDOWS or WINNT, and does not create any shortcuts to the program in the start menu. DLL's are also not registered as they are NOT required to run an Encrypted RunAs shortcut, as the interface is not displayed.

Creating Shortcuts

Start Encrypted RunAs:

Click Start > All Programs > Encrypted RunAs > Encrypted RunAs

The Encrypted RunAs program will start with the Create Shortcuts tab selected




The following information is required to be type in:

Username and Password of the account whose rights you wish the shortcut to run under, ie Administrator, the Username box will highlight green if the account exists and red if not.

Domain License Features - you can only use these features if you have the 'Domain/Unlimited Computer License', if you do not then Local Account radio button will be selected.

You can select local accounts and domain accounts by clicking the radio button, when you select Domain the domain name will automatically be filled in the textbox. If you have selected Local and you want the same shortcut to run on multiple machines then tick the 'Use local account on any computer' checkbox this should be ticked if you are sysprepping the computer and cloning the machine with programs like Ghost or Acronis.

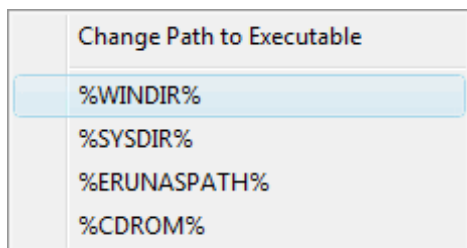
Command Line - Click the browse  button next to the Command Line text box and select the path and file you wish the shortcut to run, this can be one of the following files.

- Executable Files - EXE, MSI, COM
- Batch & Script Files - BAT, VBS, VBE, JS
- Control Panel Applets - CPL
- Microsoft Console - MSC

Encrypted RunAs automatically adds the correct local path to the program required to run the particular file ie wscript.exe for vbs and msixec.exe for msi.

If you point to a program on a mapped drive (that all users have access to), the UNC path is stored in the shortcut.

At this point you may change the path to point to a standard windows directory variable, %windir% and %sysdir%. The variable %erunaspah% is non standard but allows a shortcut to point to a program in the same directory as ERunAs.exe, this would be required to run programs in \\domaincontroller\NETLOGON where there is multiple domain controllers. Left click inside the Command Line text box and select from the list.



If you are creating a program to a program or file that is not on computer you are currently using, see Advanced Topic [Overriding Features](#)

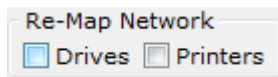
You may tick the CRC check box if you require the program or script to be fingerprinted, this then prevents the program or script the shortcut from being pointed to from being changed. If the fingerprinted program or script is changed Encrypted RunAs will not run it.

Add parameters if they are required for the program to run, if you require to pass through arguments when running the encrypted shortcut then see [Arguments](#).

You may also select if you require Network Drives or Printers to be remapped when the shortcut runs (the user account in the shortcut must have permission to use the Network Drive). If a Network Printer is default, the same printer will be default when the shortcut is run.

Netware Users: Encrypted RunAs can remap Netware shares, it cannot remap Netware

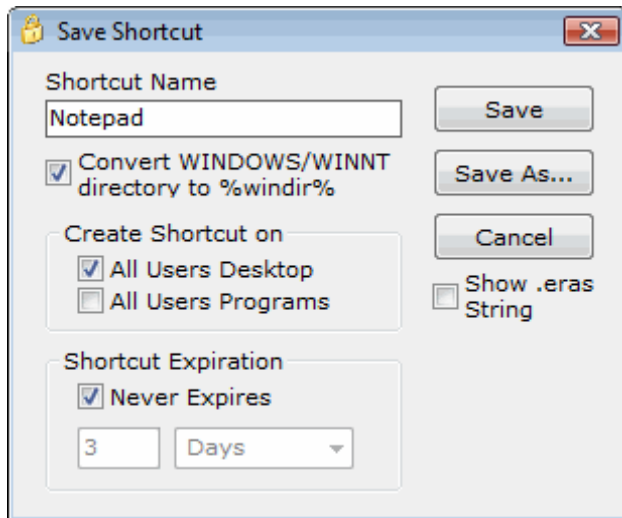
printers.



Advanced Options - Load Environment allows the current environmental variables to be passed to the Encrypted RunAs shortcut. For information on No Path Check and No Test Check see Advanced Options [Overriding Features](#).

Test the shortcut by clicking the Test Command button, if the program in the command line opens then the shortcut is functioning correctly and the Save .eras File button is now enabled, if it doesn't then check all the details typed in above.

Click the Save .eras File button, the save shortcut dialog appears:



(This example shows details for a shortcut created to C:\WINDOWS\notepad.exe)

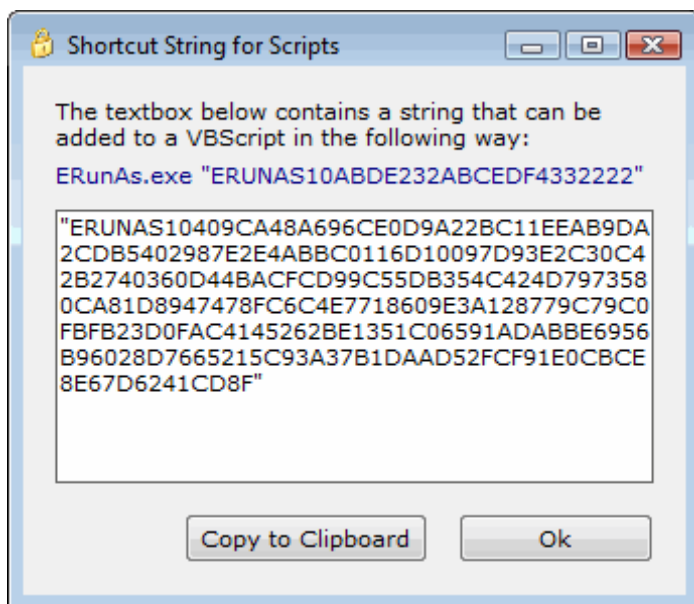
The Shortcut Name is derived from the Command Line of the shortcut, this can be changed to something more meaningful if required.

Convert WINDOWS/WINNT directory to %windir% - This is checked by default as it is useful if your shortcut is to be run on Windows 2000 and XP computers, as the %windir% variable will resolve the correct path.

Create Shortcut on - Check the boxes where you require the shortcuts to be created.

Shortcut Expiration - You may also select if you want the shortcut to expire, this can be selected in units of Days, Weeks and Months, once expired if the link is clicked Encrypted RunAs will do nothing.

Tick Show .eras String, if you wish to use the string normally contained in the .eras file in a script. The following dialog will be shown:



Click Copy to Clipboard and paste the string into a script after the command ERUNAS.exe, then click Ok. For further information about using Encrypted RunAs in scripts see Advanced Topic [Scripts](#).

Finally

Click Save - This saves the .eras file (the actual encrypted file) to the default location, which is C:\WINDOWS.

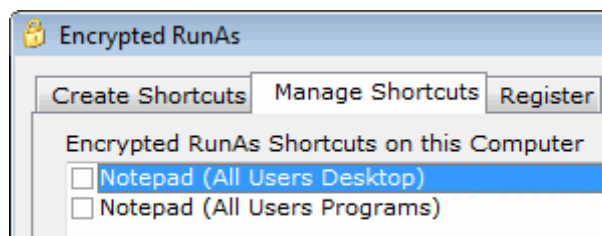
or

Click Save As... - This saves the .eras to any user selected location, this is useful when the .eras file is to be used in a script.

If you have selected Encrypted RunAs to create shortcuts, you will see them on the Desktop or Programs Menu

Managing Shortcuts

Click the Manage Shortcuts tab



Click the Scan Computer Button.

You will now be shown all Encrypted RunAs shortcuts that are on your computer.



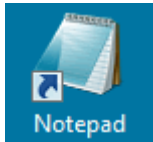
Tick the boxes (as shown above) of any shortcuts you wish to delete, then click Delete Selected Shortcuts.

Executing Shortcuts

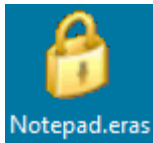
There are three ways to execute the files Encrypted RunAs creates:

- Double click the shortcut that is created on the Desktop or Program Files
- Double click the .eras (in the Windows Directory by default), or drag the .eras file onto ERunAs.exe.
- Use in Scripts, this is covered in Advanced Topics [Scripts](#)

A Encrypted RunAs shortcut created on the Desktop or Program Files, will look like a standard Windows Shortcut.



The .eras File (that contains the encrypted data) is located in the Windows Directory by default and looks like this:

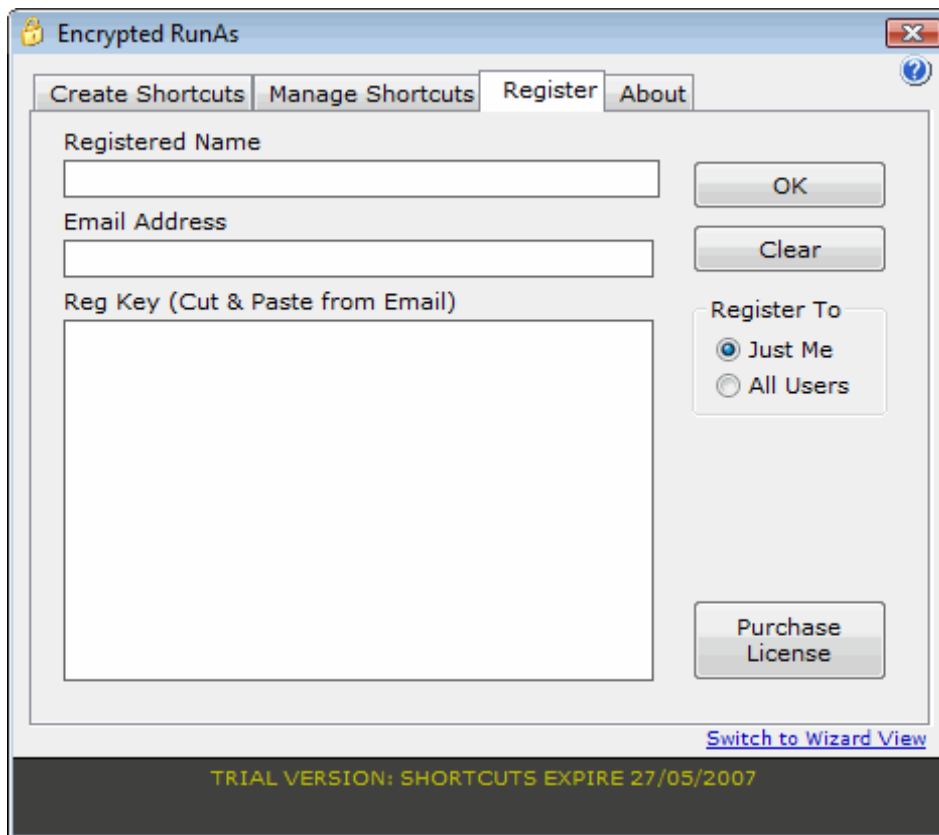


Registering Encrypted RunAs

Purchasing a License

Either go to www.wingnutsoftware.com/order.html or

Click the Register tab on the program and click the Purchase License button.

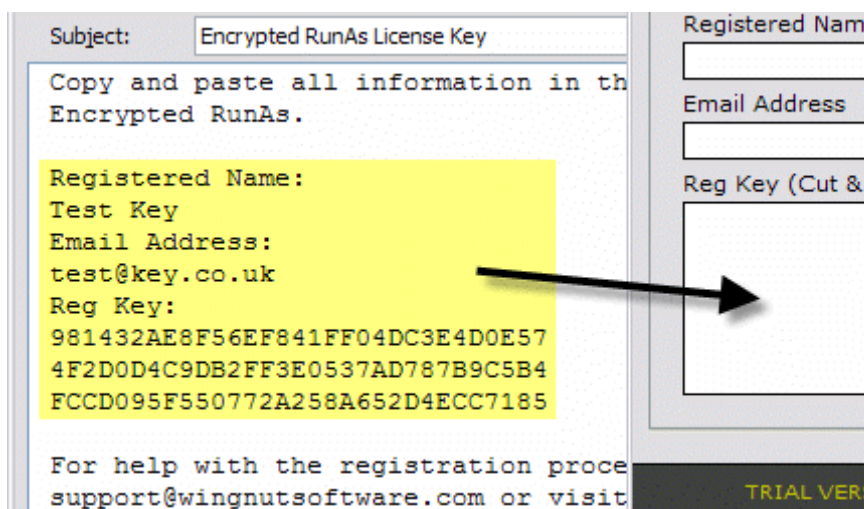


Enter Registration Details

Once you have purchased a License Key it will be emailed to you.

You are required then to Cut and Paste the information given in the email into the corresponding text boxes on the register form. Once registered you purchased licence details will appear in the bottom grey box of Encrypted RunAs.

You can also copy the whole registration key from your email and paste into the Reg Key textbox, the Registered Name and Email will automatically be completed:



Checking for New Versions

Check Internet for new updated versions

Either go to www.wingnutsoftware.com or

Click the About tab in Encrypted RunAs

Click the Check for New Version button (this requires a connection to the Internet)



You will get either of the following messages:

The Wingnut Software webpage will open and check if you have the latest version, if you do not have the latest version then a link will appear to download the latest version.

Known Issues

This section describes issues that have come to our attention, we will try to resolve the issues or offer work arounds if possible.

* A shortcut will not run if it is created with a domain account and then copied to a computer that is not joined to that domain.

* Windows XP SP2 and above: A shortcut that runs from service using a localservice account cannot execute an Encrypted RunAs shortcut or standard Microsoft RunAs command, this is a security change that was implemented from XP Service Pack 2.

Version History

29 Sep 2011 - Version 1.1 (Build #16)

FIXED - Mapped drive letter was not converted to correct UNC path if contained nested

folders, this would give a file not found error.

2 Jan 2011 - Version 1.1 (Build #14)

ADDED - Command line can now accept /wait, used to pause a script until program terminates ie: %WINDIR%\ERunAs.exe %WINDIR%\Notepad.eras /wait

6 Jan 2009 - Version 1.1 (Build #12)

FIXED - When remapping drives drive with spaces in UNC paths were not re-mapped.
ADDED - Added to links for FREE/PAID Version support.

12 Jun 2008 - Version 1.1 (Build #10 BETA)

CHANGED - Installation now uses MSI file, a Silent MSI (ERunAs.exe only) will be available.

CHANGED - The ERunAsSetup.msi and ERunAs.exe are now digitally signed.

FIXED - Fixed minor issue with some arguments (paths with spaces), quotes can now be added in arguments.

CHANGED - Drives mapped with SUBST are now remapped.

CHANGED - You can now right click a .eras file to edit/open with Encrypted RunAs (when installed with msi)

CHANGED - .eras file either right-clicked edit or opened within the GUI are now saved back to where they were opened from.

CHANGED - Open or edit .eras with a right click context menu.

25 Jun 2007 - Version 1.1 (Build #9)

CHANGED - Clear indication of Domain License features

ADDED - Load Environment, allows the environmental variables to be passed from the current user to the Encrypted RunAs shortcut.

ADDED - Register to all users, this allows the program to be used by all users or a computer.

ADDED - Bypass path and Test check, request by users who create shortcuts to programs and files not installed on the computer they are using.

ADDED - Support for automatically changing C:\windows or c:\winnt to %windir%

CHANGED - Checkbox for local account to run on any computer, this replaces the use of LOCALM domain achieve this feature.

FIXED - Improved method of detecting Local Accounts to fix minor local account issues.

ADDED: Tested Vista Compatibility

CHANGED: Encrypted Runas Installer will warn if installed without Admin rights.

26 May 2006 - Version 1.1 (Build #6)

FIXED - Ability to override the browse to in the command line (as stated in the manual this is a unsupported feature)

ADDED - The variable %username% (current logged in user) can now be passed through with <arg> parameter (see [Arguments](#)).

ADDED - Shortcut created on Windows XP now checks that the password is valid during the test (Not working with Windows 2000 yet)

25 May 2006 - Version 1.1 (Build #5)

ADDED - Added support for a %CDROM% variable, this can only find the first available CDROM/DVD drive on computer.

FIXED - logging not working correctly, /log switch must be before the /arg switch.

FIXED - On some computers the license panel was showing internal product codes instead of license purchased ie 101 instead of 1.

CHANGED - Link to support email on about tab replaced with link to support webpage.

11 May 2006 - Version 1.1 (Build #4)

FIXED - Could browse to .bat files, but the .bat extension would not appear in browse to dropdown list.

ADDED - Direct support for .cpl (control panel applets) files, which can be found in c:\windows\system32\ (ncpa.cpl (network) will not work see scripts and utilities page on website for alternative)

9 May 2006 - Version 1.1 (Build #2)

FIXED - Removed the pop up that showed the filetype when shortcuts were tested or run, this was from last minute debugging of arguments feature.

CHANGED - The drop down list of file types in the save dialog are now displayed in 2 parts, Executable Files and Script Files.

ADDED - Support for .JS files.

8 May 2006 - Version 1.1 (Build #1)

ADDED - Encrypted RunAs can now pass arguments through Encrypted Shortcut using <arg> in parameters textbox.

ADDED - Can now browse directly to .MSI files, /i (Inst all Option) is prefixed to the MSI path.

ADDED - Method to override some of Encrypted RunAs features (unsupported).

FIXED - Can now browse to an executable on a Novell file server.

FIXED - Re-mapping of printers on Windows 2003 now works, but will not make the same printer the default when running the shortcut.

FIXED - The help files now pop-up when F1 is pressed, this did not work correctly on some installations.

FIXED - 'Licenced to' bar can now display longer company names.

CHANGED - Version numbering system, format is now Major, Minor, Build (was Major,0,Build)

19 Oct 2005 - Version 1.0.194

Re-release of 1.0.193, due to false positive with McAfee Anti Virus.

09 Apr 2005 - Version 1.0.193

ADDED - The Encrypted shortcut can now be added to a script as a string, this will make ERunAs more robust in scripts as only the program file (ERunAs.exe) has to be found.

ADDED - Encrypted RunAs now a Wizard to guide users through the creation of shortcuts.

ADDED - The trial version has an option to select which license to trial, DOMAIN or COMPUTER, this avoids confusion of which license to buy.

ADDED - Account username is now highlighted in red or green depending if a valid account has been entered.

CHANGED - Check for new version now opens a webpage that shows the latest version with a link to download it.

CHANGED - The license key from the Registration Email may now be pasted into the "Reg Key" box, name and email will be entered automatically.

08 Mar 2005 - Version 1.0.192

CHANGED - Trial version ONLY, trying Encrypted RunAs with a domain account does not display the trial version message if the shortcut is run on the machine it was created.

20 Jan 2005 - Version 1.0.191

FIXED - Remap Network Drives function now works with Windows XP Service Pack 2.

19 Dec 04 - Version 1.0.190

FIXED - In certain circumstances the LOCALM method or creating a shortcut did not work as intended, this has now been fixed.

CHANGED - Logging is no longer on by default, this may be slowing down the product when running in domain scripts as all users write back to a central log file. Logging can be turned on in shortcuts or scripts by editing the shortcut path and adding /log after erunas.exe test.eras.

18 Oct 04 - Version 1.0.189

ADDED: Ability to select whether shortcut re-maps network drives and network printers.

ADDED: Encoded VBE files are now allowed alongside VBS.

ADDED: When selecting a VBS or VBE file, you can now choose to run this script with WSCRIPT.EXE or CSCRIPT.EXE (both options allow you run the script in batch mode, which does not display any prompts or script errors)

FIXED: Some programs were having problems with the current program path, As ERunas.exe runs in C:\WINDOWS this was the path for everything. The current program path is now the path of the program or script.

20 Jul 04 - Version 1.0.188

FIXED: Fixed problem when shortcut is running from a network share, it will now run correctly if the UNC path contains spaces.

27 Jun 04 - Version 1.0.187

FIXED: Test button now works correctly.

CHANGED: XP works differently with programs on mapped drives, Encrypted RunAs detects a command line pointing to a mapped drive and extracts the UNC path.

ADDED: With a domain license an account created with the domain name LOCALM will allow that shortcut to be used on any machine as long as the local account exists.

19 May 04 - Version 1.0.186

FIXED: Removed pop up displaying path of shortcut file when testing shortcut.

17 May 04 – Version 1.0.185

CHANGED: VBScript files (.vbs) can now be browsed to directly in the command path, wscript.exe path is automatically added by the program. The CRC of the VBScript file can be checked (instead of only the wscript.exe in windows system folder).

FIXED: Small problem with the %sysdir% variable.

14 May 04 – Version 1.0.184

FIXED: Problem pointing to files that have spaces.

ADDED: Use variables to point to Windows and Windows System directories, and Encrypted RunAs path.

8 May 04 – Version 1.0.183

FIXED: Minor problem with Manage Shortcuts not detecting all shortcuts.

CHANGED: Reduced the sized of the compiled help file.

7 May 04 – Version 1.0.182

CHANGED: It is now possible to test Encrypted RunAs with domain accounts. The shortcut will still expire after 3 days and a message declaring it is created with the trial version will

pop up on all machines it is run on (be careful using in logon script s).

4 May 04 – Version 1.0.181

FIXED: Problem with Manage Shortcuts, not seeing shortcuts already on a machine.

4 May 04 – Version 1.0.180

CHANGED: Program now has a tabbed Interface

CHANGED: Save .eras now displays an options screen before saving .eras file and creating shortcut.

ADDED: Shortcuts can now be created on the All User Desktop and All User Programs (User Selectable), rather than having to be moved there manually.

ADDED: Registered users can now select an expiration time for the shortcuts, if they require.

ADDED: Shortcut Management feature allows easy deletion of shortcuts created with Encrypted RunAs.

ADDED: Purchase License Button on Register Tab

ADDED: Check website for updated version button on the about page

ADDED: A Windows .CHM help file

25 Apr 04 – Version 1.0.176

FIXED: Extra carriage returns when registering a registration key, caused the program to report that it was registered when it wasn't.

24 Apr 04 – Version 1.0.175

FIXED: Problem with limited users writing to the log file.

23 Apr 04 – Version 1.0.174

FIXED: Checked to see if .eras file is available from shortcut, if not display message.

16 Apr 04 – Version 1.0.173

FIXED: Added PDF Manual to program files entry.

15 Apr 04 – Version 1.0.169

FIXED: On loading a previous saved shortcut from another machine and then ticking the CRC checkbox created an error if the shortcut did not exist.

13 Apr 04 - Version 1.0.160

CHANGED: The icon for the desktop shortcut is now the original program's icon, ie nero if shortcut points to nero.

CHANGED: The save shortcut button does not display the last viewed file.

CHANGED: When saving eras file now checks for overwriting.

ADDED: The program now creates a log file so messages that would normally popup during command line mode are written to file, more messages still need to be added to this feature.

FIXED: ERUNAs When the program runs the program will now correctly register the .eras filetype to point to the current location of ERUNAs.exe

11 Apr 04 - version 1.0.133

First public release.

License Agreement

1. GRANT OF LICENSE.

Wingnut Software, as Licensor, grants to you, the Licensee, a non-exclusive license to use this software program (hereinafter the "SOFTWARE") in accordance with the terms contained in this license.

2. INSTALLATION.

You may use the SOFTWARE on a single computer to create Encrypted RunAs short cut files, each machine that you create Encrypted Runas shortcut files within your network requires a Individual Computer License. An Unlimited computer/1 domain license allows the SOFTWARE to be installed, and used, on any machine in your domain/network. Encrypted RunAs shortcut files created with a domain accounts can be used on any computer throughtout the domain. The 1 Domain license only covers one domain name within your company.

3. NO REVERSE ENGINEERING.

You may not modify, disassemble or decompile the SOFTWARE or the stand-alone inst all programs created with the SOFTWARE, in whole or in part.

4. COPYRIGHT.

All title and copyrights in and to the SOFTWARE, including but not limited to any images, texts, and sounds incorporated into the SOFTWARE, are owned by Wingnut Software or its suppliers.

5. REDISTRIBUTION.

You can freely distribute the SOFTWARE, provided that:

(a) You only distribute the original Install program of the SOFTWARE. (You can download the original Install program of the SOFTWARE from Wingnut Software's Website, <http://www.wingnutsoftware.com>.) UNDER NO CIRCUMSTANCE ARE YOU LICENSED TO DISTRIBUTE ANY OTHER FILE OF THE SOFTWARE.

(b) you DO NOT charge, or ask for donations, for this.

(c) you DO NOT distribute it with any other product, commercial or not, without prior written permission.

6. GOVERNING LAW.

If you acquired this product in United Kingdom, this agreement is governed by the United Kingdom laws. If you acquired this product outside United Kingdom, then local law may apply.

7. DISCLAIMER OF WARRANTY.

THE SOFTWARE AND THE ACCOMPANYING FILES ARE PROVIDED "AS IS" WITHOUT WARRANTY OF ANY KIND. TO THE MAXIMUM EXTENT PERMITTED BY APPLICABLE LAW, WINGNUT SOFTWARE DISCLAIMS ALL WARRANTIES, EXPRESSED OR IMPLIED, INCLUDING, BUT NOT LIMITED TO, ANY IMPLIED WARRANTIES OF PERFORMANCE, MERCHANTABILITY, FITNESS FOR A PARTICULAR PURPOSE, AND NONINFRINGEMENT. TO THE MAXIMUM EXTENT PERMITTED BY APPLICABLE LAW, IN NO EVENT SHALL WINGNUT SOFTWARE BE LIABLE FOR ANY DIRECT, INDIRECT, CONSEQUENTIAL OR INCIDENTAL

DAMAGES (INCLUDING, BUT NOT LIMITED TO, DAMAGES FOR LOSS OF BUSINESS PROFITS, BUSINESS INTERRUPTION OR LOSS OF BUSINESS INFORMATION) ARISING OUT OF THE USE OF OR INABILITY TO USE THE SOFTWARE, EVEN IF WINGNUT SOFTWARE HAS BEEN ADVISED OF THE POSSIBILITY OF SUCH DAMAGES.

Wingnut Software

<http://www.wingnutsoftware.com>

Advanced Topics

Scripts

To use Encrypted RunAs in scripts the ERunAs.exe and the .eras must be located where all users can see the file, by default Encrypted RunAs is installed in the Windows Directory.

Single Computer License.

To add to a script use the following syntax:

```
ERunAs.exe YourErasFile.eras
```

(You can also use ERunAs.exe ERUNAS109817293871239791..., see [Creating Shortcuts](#))

If you have problems with this you may need to use %windir%\ERunAs.exe %windir%\YourErasFile.eras on the command line.

To switch on diagnostic logging, add /log after "ERunAs.exe YourErasFile.eras", the /log switch must be before /arg switch if arguments are being past through. So the command would look like this example:

```
ERunAs.exe YourErasFile.eras /log /arg c:\
```

add /wait if you want your script to wait unit your erunas shortcut terminates, for example:

```
ERunAs.exe YourErasFile1.eras /wait /arg c:\  
ERunAs.exe YourErasFile2.eras /arg c:\
```

Domain Computer License.

If you have used a domain account to create the .eras file, you can use Encrypted RunAs in logon scripts across the domain.

Save the ERunAs.exe and YourErasFile.eras file (and if required the program or script) to the NETLOGON folder of your domain controller.

Here is an example of how to use in a login script written in VBScript:

```
ScriptPath = left(WScript.ScriptFullName, len(WScript.ScriptFullName) -  
len(WScript.ScriptName))  
WshShell.Run ScriptPath & "ERunAs.exe " & ScriptPath & "example.eras" ,0,TRUE
```

(You can also use ERunAs.exe ERUNAS109817293871239791..., see [Create Shortcut](#))

By adding the ScriptPath variable, it forces the logon script to use the same domain controller to load and run the files.

To switch on diagnostic logging, add /log after "ERunAs.exe YourErasFile.eras".

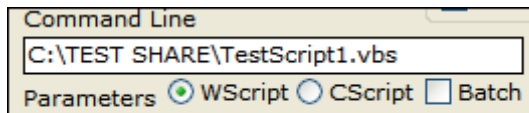
Running a program in NETLOGON

If you have copied the program you wish to run to the NETLOGON folder, before saving the shortcut change the path to %ERUNASPATH% this will then run the program in the same directory at ERunAs.exe. See [Create Shortcuts](#) for further information.

Running a VBScript in NETLOGON

If you want to run a VBScript with extra rights to change permissions, copy files etc from within a Logon Script, save the vbs file into the NETLOGON folder, browse directly to the vbs file and change the path to %ERUNASPATH%, see Create Shortcuts for further information on how to do this. Encrypted RunAs automatically adds the path required to wscript.exe on the local machine (either c:\windows\system32 or c:\winnt\system32 depending on operating system).

From version 1.0.189 you can now select to use VBE Scripts, also you can select whether to use WSCRIPT.EXE or CSCript.EXE to run your script, and can choose to run the script in batch mode (no errors or prompts are shown).



If you need further help with using Encrypted RunAs in scripts, contact support@wingnutsoftware.com.

Overriding Features

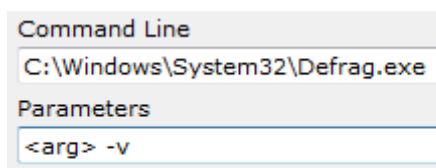
Certain features of Encrypted RunAs can be overridden, these are unsupported features as these bypass checks to make sure the shortcut is valid before saving. These are useful for users creating shortcuts to programs that are not on the current system they are creating the shortcut on.

No Path Check - If you require to type in the command path manually, for example to a file that is not on the system you are creating the shortcut on, then check No Path Check, you will probably need to check the No Test Check

No Test Check - This bypasses the feature that requires the shortcut to be tested before it is saved. If you want to do this then check No Test Check

Arguments

Arguments can be passed through to the Encrypted Shortcut using <arg> in parameters box. On the command line add /arg argument, ie:



The following command would pass c:\ through to the defrag.exe command with the verbose option switched on:

```
ERunAs.exe defrag.eras /arg c:\
```

This would be the same as 'defrag.exe c:\ -v' on the command line

Version 1.1 build 6: The %username% variable can be passed through after <arg> it is then replaced with the username and the currently logged in user.

NOTE: If you are using the logging switch this must appear before argument switch ie /log /arg c:\text.txt

Best Practices

It is not recommended to use the administrator accounts in the Encrypted Shortcuts, the following is a suggestion how to configure your computer/network.

User Rights - Local Machine

It is a good practice to create a user account and add this to the administrator group. Do not use the administrator account for shortcuts.

Users Rights – Domain Accounts

In Active Directory create a global group called LOCALADMINUSER and LOCALPOWERUSER.

On the local machine add the LOCALADMINUSER domain account to the Local Administrator Group, LOCALPOWERUSER domain account to the Local Power User Group.

In active directory create a user account ie RunNero or RunSoftware and add this to the LOCALADMINUSER group you created early.

Creating the shortcut this way makes it easier to disable the shortcut and also disable the program running with extra rights on the local machine, you just need to disable the RunNero or RunSoftware Account.

CAUTION: This program is written to allow users to run programs with elevated rights. As the encryption keys are contained within the program it is not as secure as a key/password contained in a users head. You must also note that a user with advanced knowledge and the correct tools could retrieve the password directly from the computers quicker than decompiling this program, please read best practices on how to set up accounts on domains and local machines. This applies to all programs of this type.

Index

- A -

Arguments 18

- B -

Best Practices 19

- C -

Checking for New Versions 9

Creating Shortcuts 4

- E -

Executing Shortcuts 8

- K -

Known Issues 10

- L -

License Agreement 15

- M -

Managing Shortcuts 7

- O -

Overriding Features 18

Overview 3

- R -

Registering Encrypted RunAs 8

- S -

Scripts 17

System Requirements 4

- V -

Version History 10